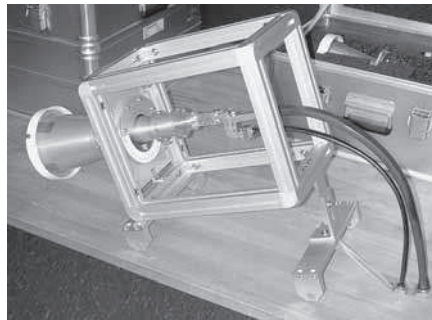
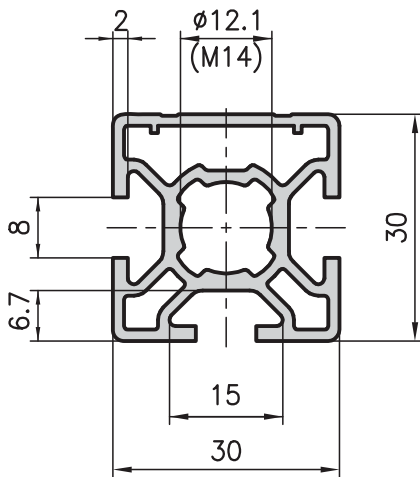
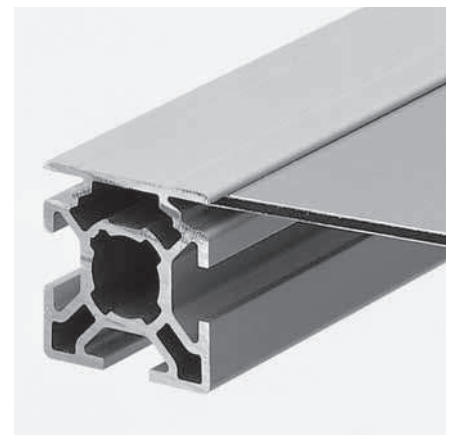
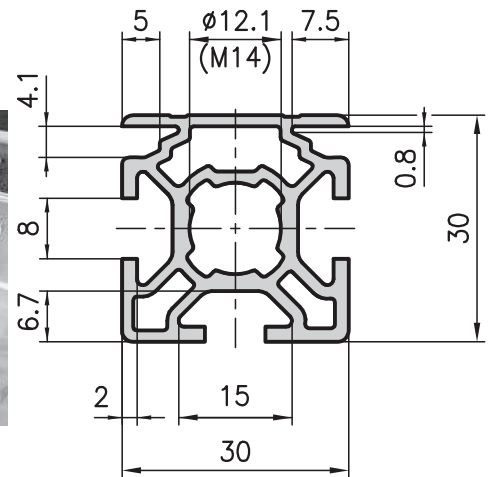


30x30 face extrusion type B03-2

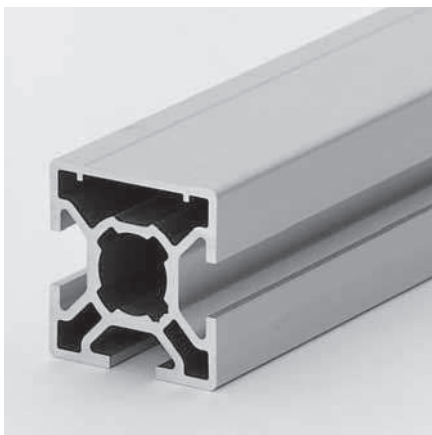


30x30 face extrusion with panel slots type B02-2



Application

For lightweight machine frames, protective guards, safety fencing, etc. Metal paneling sheets, as well as composite panels, acrylic glass panels and all-plastic panels up to 4 mm in thickness can be fixed in place into the panel slots on the face extrusions.

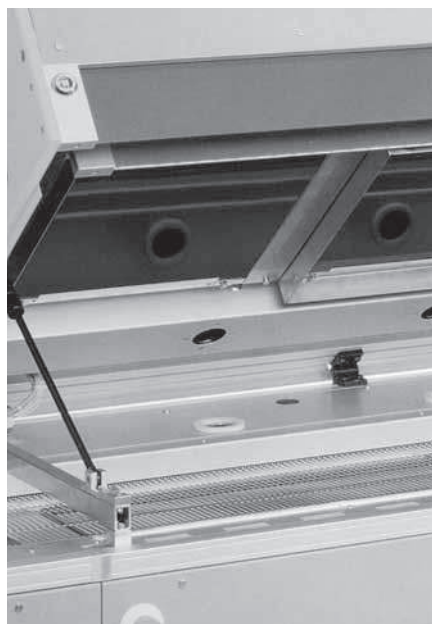


Technical data

I_x	=	2.85 cm ⁴
I_y	=	2.83 cm ⁴
W_x	=	1.90 cm ³
W_y	=	1.83 cm ³
Cross-section area	=	3.10 cm ²
Weight	=	0.8 kg/m

Order data Order number

30x30 face extrusion	
Standard length 5000 mm	B03-2-00/5000
30x30 face extrusion	
Cut to length	B03-2-02-02/...
Extra machining	Pages 55-59



Technical data

I_x	=	2.93 cm ⁴
I_y	=	2.76 cm ⁴
W_x	=	1.93 cm ³
W_y	=	1.84 cm ³
Cross-section area	=	3.18 cm ²
Weight	=	0.9 kg/m

Order data Order number

30x30 face enclosure extrusion	
Standard length 5000 mm	B02-2-00/5000
30x30 face enclosure extrusion	
Cut to length	B02-2-02-02/...
Extra machining	Pages 55-59