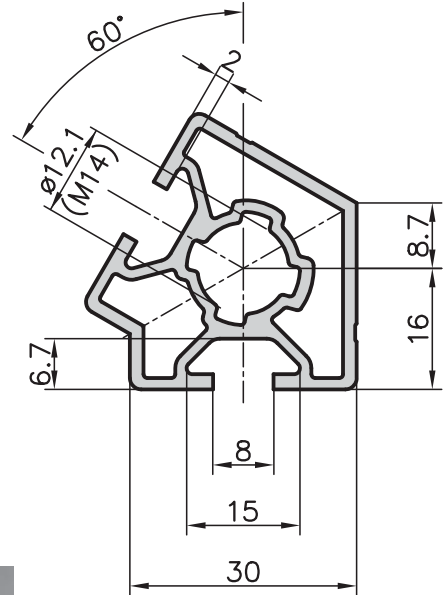


## Corner extrusion 60° type B04-6



### Technical data

$I_x$	=	3.07 cm <sup>4</sup>
$I_y$	=	2.94 cm <sup>4</sup>
$W_x$	=	1.45 cm <sup>3</sup>
$W_y$	=	1.51 cm <sup>3</sup>
Cross-section area	=	3.04 cm <sup>2</sup>
Weight	=	0.9 kg/m

### Order data

### Order number

Corner extrusion 60°	
Standard length 5000 mm	B04-6-00/5000
Corner extrusion 60°	
Cut to length	B04-6-02-02/...
Extra machining	Pages 55-59