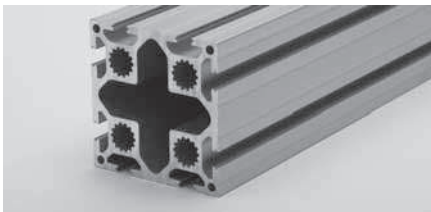
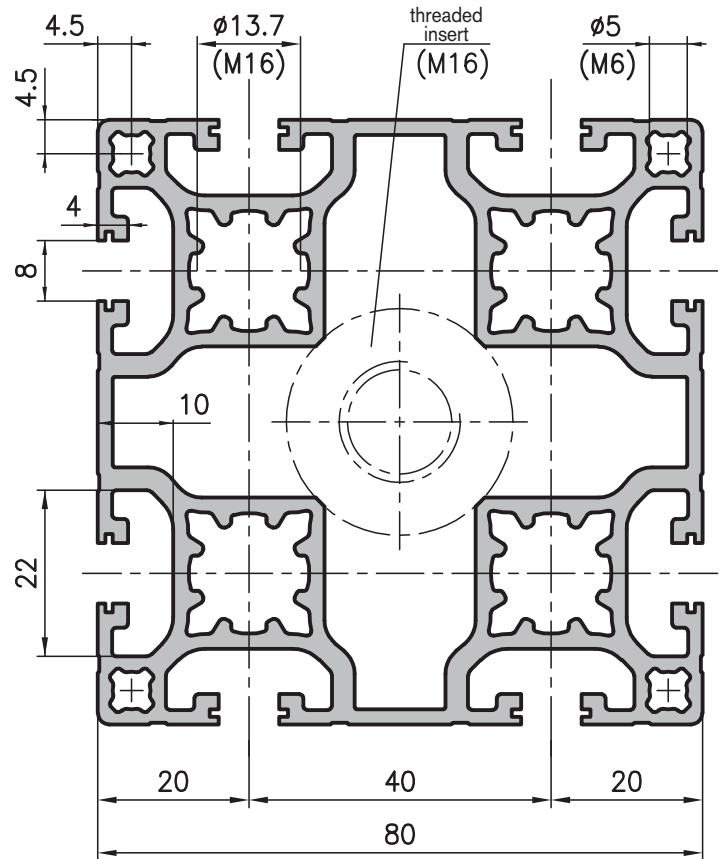
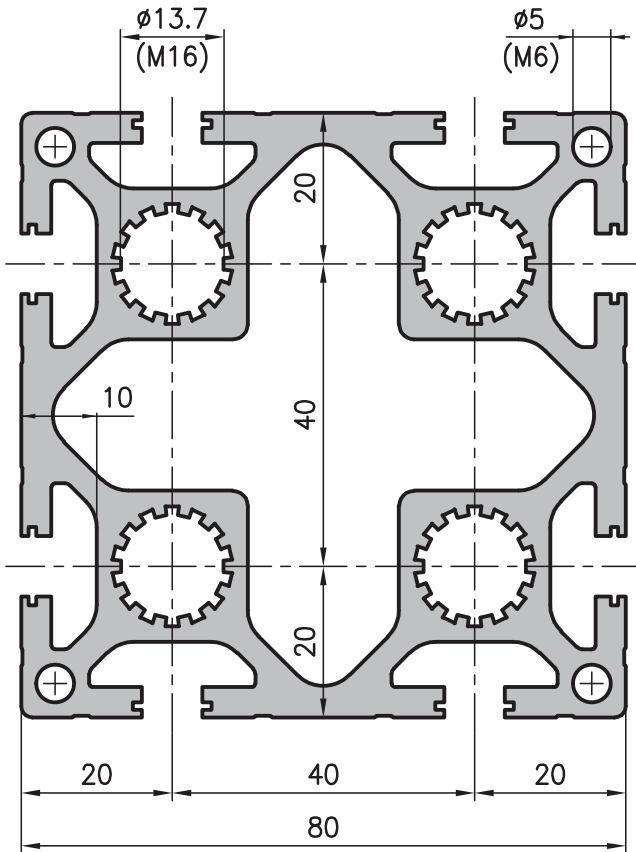


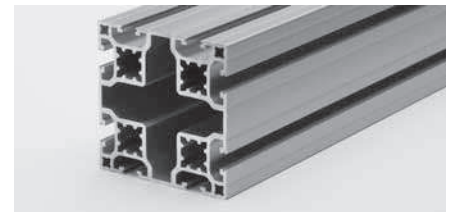
80x80 base extrusion type C01-4

80x80 lightweight extrusion type C03-4



Application

This is mainly used as a support, although it can also be used as a cross-beam where higher loads are involved. Especially C01-4 is, of course, also ideal as a reservoir for liquids or gases. The large cavity can also be used effectively for holding load balancing weights. This extrusion is perfect for innovative designers.



Technical data

$I_{x,y}$	=	154.70 cm ⁴
$W_{x,y}$	=	38.68 cm ³
Cross-section area	=	22.10 cm ²
Weight	=	6.0 kg/m

Order data

Order number

80x80 base extrusion	
Standard length 5000 mm	C01-4-00/5000
Standard length 6000 mm	C01-4-01/6000
80x80 base extrusion	
Cut to length	C01-4-02-02/...
Extra machining	Pages 55-59

Technical data

$I_{x,y}$	=	115.66 cm ⁴
$W_{x,y}$	=	28.92 cm ³
Cross-section area	=	16.30 cm ²
Weight	=	4.4 kg/m

Order data

Order number

Lightweight extrusion 80x80	
Standard length 5000 mm	C03-4-00/5000
Standard length 6000 mm	C03-4-01/6000
Lightweight extrusion 80x80	
Cut to length	C03-4-02-02/...
Extra machining	Pages 55-59

