

How to Order

APE06 – G- 1 – 2

① ② ③ ④

① Model	APE06	APE08	
② Function	B=NPT1/8 NPT1/4	D=NPSF1/8 NPSF1/4	G=G1/8 G1/4

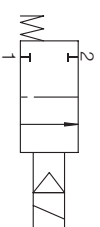
③ Rated voltage ④ Lead wire type

1	DC24V	1	DIN type without lead wire
2	AC110V	2	DIN type with lamp without lead wire
3	AC220V		



Features

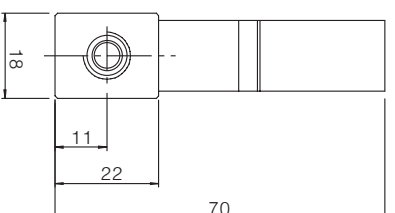
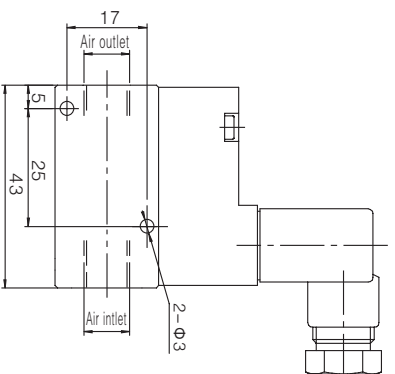
☆ The small solenoid valve normally closed can remote control compressed air with large flow, and supply compressed air when the current is switched on.



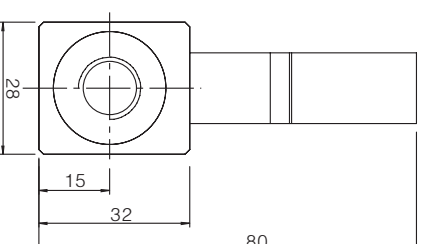
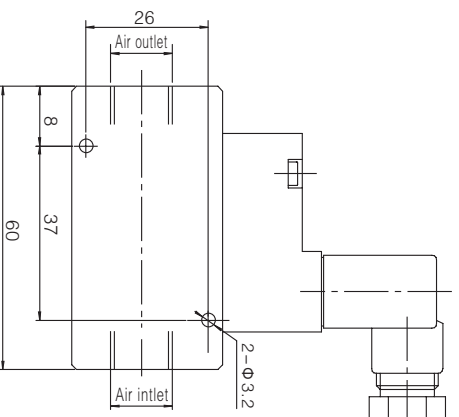
Specifications

Air supply pressure	2.5~7bar
Ambient temperature	0~60°C
Valve body material	Aluminum
Working Voltage	DC: 24V AC: 110V, 220V -50/60Hz
Current consumption	0.85W, 1.3W

Dimensions (mm)



Air inlet(Air outlet)
B=NPT1/8
D=NPSF1/8
G=G1/8



Air inlet(Air outlet)
B=NPT1/4
D=NPSF1/4
G=G1/4

APE08

APE06