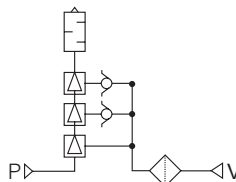


Features

- ☆ Adopt 3 levels rise pressure pipe,vacuum flow rate can amplify 250%
- ☆ Can be with valve,vacuum gauge and vacuum pressure switch
- ☆ Can replace filter element
- ☆ Built-in vacuum filter and silencer
- ☆ Can be installed at 3 directions(top,bottom,side)



Specifications

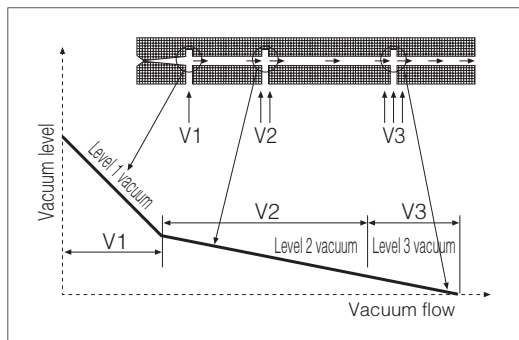
Nozzle diameter	Φ 1.2mm
Max.vacuum flow rate	100l/min
Air consumption	63l/min
Max.vacuum pressure	-84kPa
Max.operating pressure	7bar
Supply pressure range	2~5bar
Standard supply pressure	4bar
Operating temperature range	5~50°C

Supply/Release Valve Specifications

Part Number	SYJ514-□□□
Type of valve actuation	Internal pilot type N.C.
Operating pressure range	2~5bar
Ambient and fluid temperature	5~50°C
Response time(for 0.5MPa)	25ms or less
Max.operating frequency	5Hz
Manual operation	Non-locking push type slotted locking type
Pilot exhaust type	Pilot valve individual exhaust type. Main valve/Pilot valve common exhaust
Lubrication	Not required
Mounting position	Unrestricted
Impact/Vibration resistance	150/30m/s ²
Enclosure	Dust proof

Energy saving

3 Levels rise pressure pipe design



How to Order

Without valve **AZL 112** □ □ □ □
 With valve **AZL 112** □ □ □ **K1 5 L Z** □ - **GN RL5**
 Nozzle diameter
 12: Φ 1.2mm
 ① ② ③ ④ ⑤ ⑥ ⑦ ⑧ ⑨

① Exhaust specifications

Nil	Built-in silencer
P	Port exhaust

② Exhaust port thread specification (port exhaust only)

Nil	Rc 1/2
F	G 1/2
N	1/2-14NPT
T	1/2-14NPTF

③ Supply valve/Release valve combination

K1	With supply and release valves
K2	With supply valve

④ Rated Voltage

DC Specification		AC Specification	
5	24V	1	100V
6	12V	2	200V
V	6V	3	110V
S	5V	4	220
R	3V		

⑤ Lead wire type

G	Direct lead out type	Lead wire length 0.3m
L	L type plug connector	Lead wire length 0.3m

⑥ Light/Surge voltage suppressor

Nil	Without light/surge Voltage suppressor
S	With surge voltage suppressor
Z	With light/surge voltage suppressor

⑦ Manual override

Nil	Non-locking push type
D	Slotted locking type

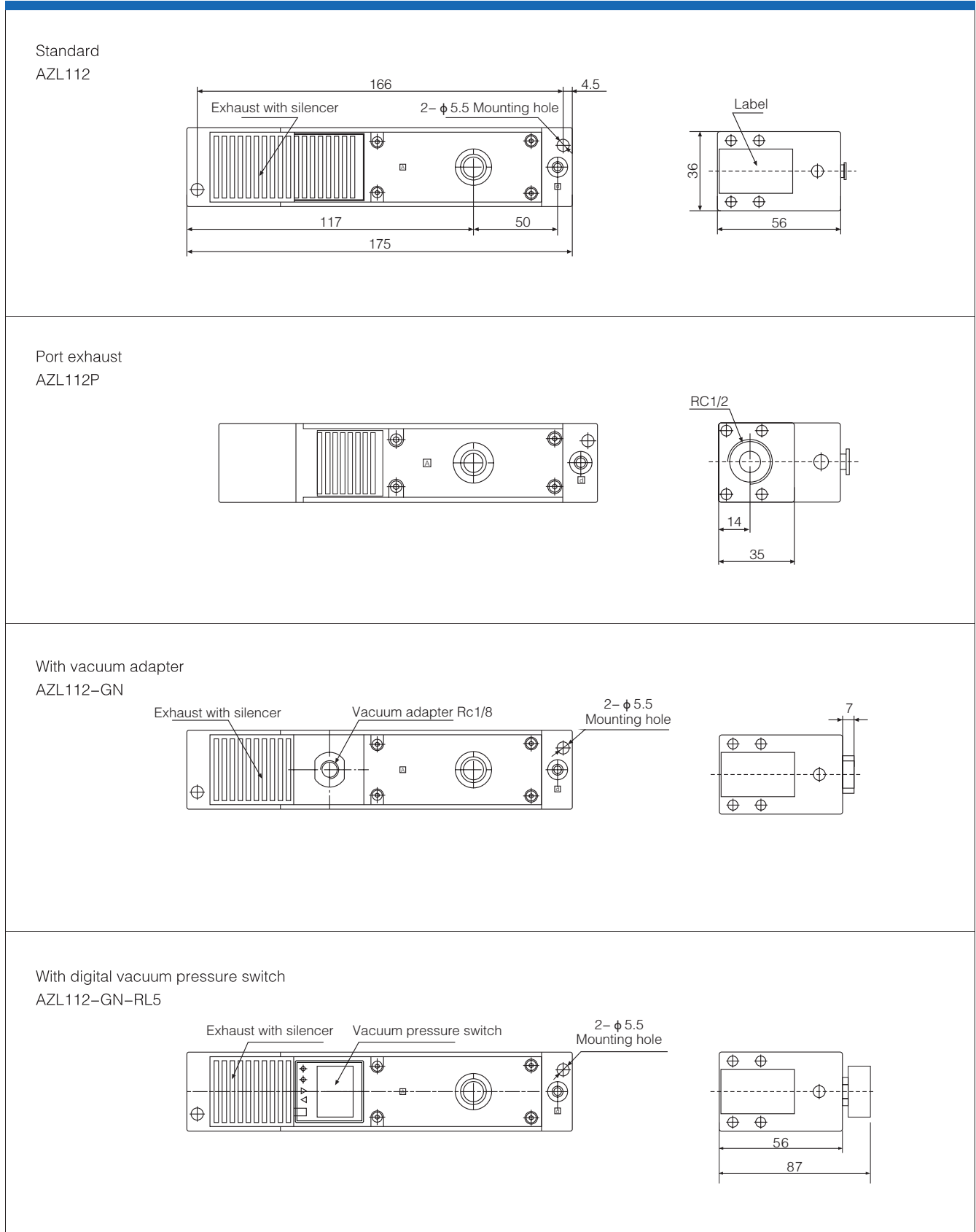
⑧ Vacuum pressure sensor

Nil	None
D	Vacuum adapter Rc1/8

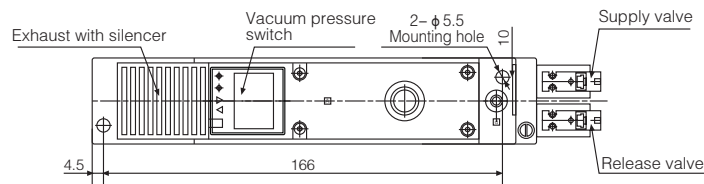
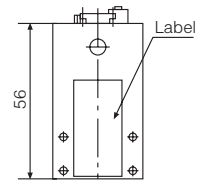
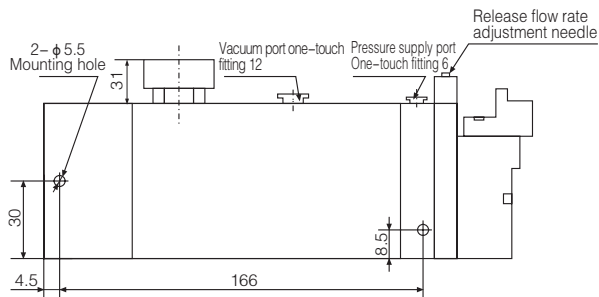
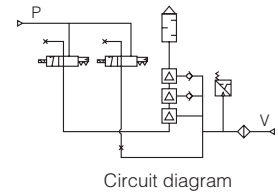
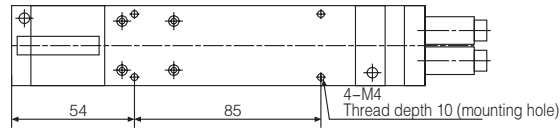
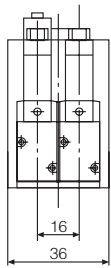
⑨ Digital vacuum pressure switch specification **RL5**

RL5C(-100~100kPa)		
RL5C-02	NPN Output	lead wire length2m
RL5C-04	PNP Output	length2m
RL5V(0~-100kPa)		
RL5V-02	NPN Output	lead wire length2m
RL5V-04	PNP Output	length2m

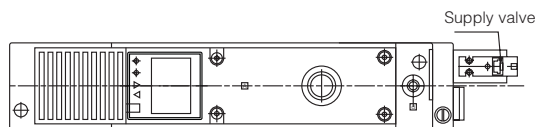
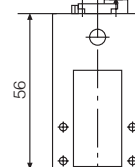
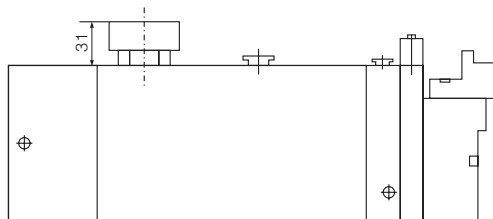
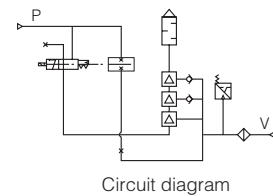
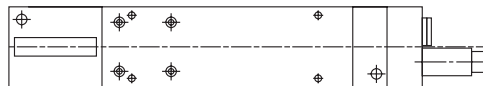
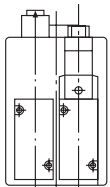
Dimensions (mm)



With supply valve and release valve
AZL112-K1□□□-GN-RL5



With supply valve
AZL112-K2□□□-GN-RL5



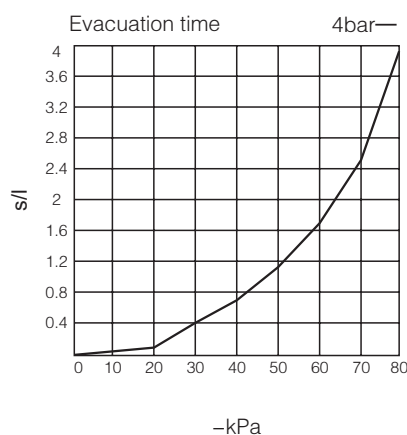
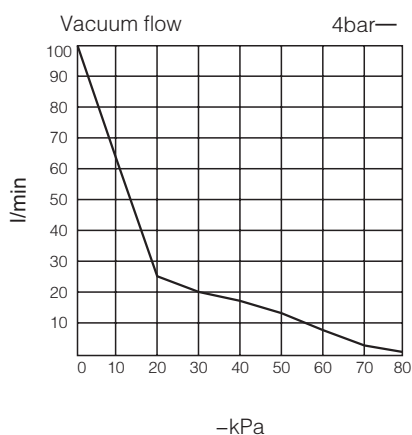
• AZL112

Vacuum flow(l/min)at different vacuum levels(-kPa)

Air supply pressure bar	Air consumption l/min	Vacuum flow (l/min) at different vacuum levels(-kPa)									Max.vacuum level -kPa
		0	10	20	30	40	50	60	70	80	
4	63	100	65	26	20	18.5	13	8	5	2.8	84

Evacuation time(s/l)to reach different vacuum levels(-kPa)

Air supply pressure bar	Air consumption l/min	Evacuation time (s/l) to reach different vacuum levels(-kPa)								Max.vacuum level -kPa
		10	20	30	40	50	60	70	80	
4	63	0.05	0.172	0.4	0.67	1.07	1.63	2.46	3.9	84



ABM

ABX

ABM/ABX
Combined type

AM

AL

AH

AM
Combined type

AL
Combined type

AH
Combined type

AZL112

AZL212

ACP

ACPF

ACV

AZH

AZU

ASBP