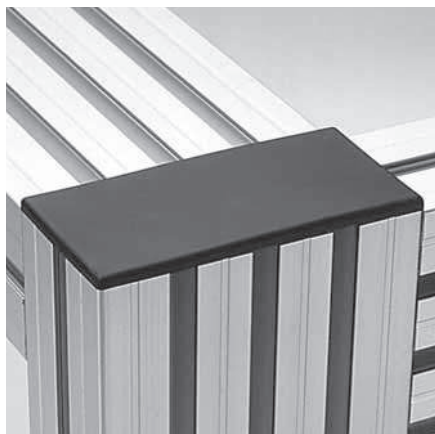
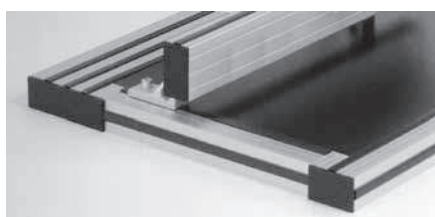
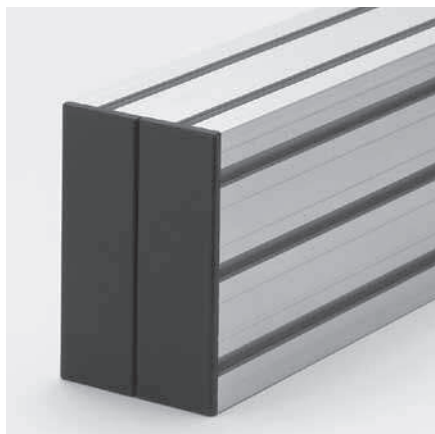


End caps



Application

End caps are used as covers for the exposed ends of extrusions. They prevent injury from the sharp edges of the extrusions. Special centring elements make them easy to fix and prevent the caps from twisting. Two end caps can be used together to cap off larger extrusions, eg extrusion 80x120 uses two 40x120 end caps.



Specification

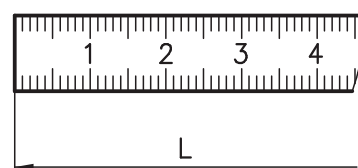
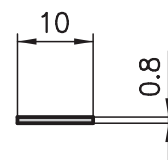
PA-GF, black / -G grey

Extrusion	Cap height
Base of 50 / 40	4 mm
Base of 30 / 20	3 mm

Order data	Order number
End caps 50x50	A40-10 (-G)
End caps 50x50	A40-19 (extr. A19-1)
End caps 50x45°	A40-80
End caps 50x100	A40-20 (-G)
End caps 50x150	A40-30
End caps 100x100	A40-50 (-G)
End caps 40x40	C40-10 (-G)
End caps 40x40	C40-83 (extr. C03-8)
End caps 40x45°	C40-80 (extr. C02-8)
End caps 40x45°	C40-84 (extr. CE4-4)
End caps 40x80	C40-30 (-G)
End caps 40x120	C40-90
End caps 80x80	C40-20 (extr. C01-2)
End caps 80x80	C40-40 (-G)

Order data	Order number
End caps 30x30	B40-30 (-G)
End caps 30x30	B40-10 (extr. B01-1)
End caps 30x30	B40-80 (extr. B01-8)
End caps 30x30°	B40-33
End caps 30x45°	B40-45
End caps 30x60°	B40-66
End caps 30x50	B40-90
End caps 30x60	B40-60 (-G)
End caps 30x95	B40-50
End caps 30x100	B40-20
End caps 30x120°	B40-40
End caps 30 8-Kt.	B40-15
End caps 60x60	B40-65
End caps 20x20	D40-30 (-G)
End caps 20x20	D40-80 (extr. D03-8)
End caps 20x47	D40-20
End caps 20x40	D40-60
End caps 20x150	D40-19
End caps 20 oct.	D40-10

Aluminium filler strip

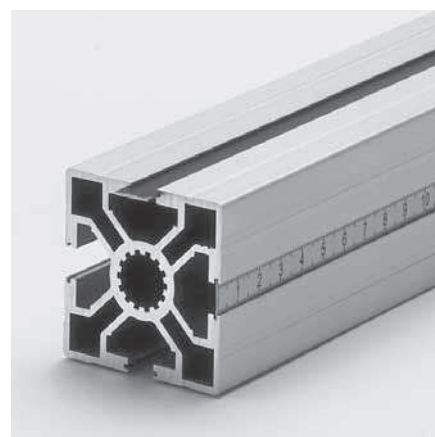


Application

These aluminium strips can be used to blank off the longitudinal slots on all extrusions with a base of 40 and 50. They are extremely easy to cut to length using tin snips or shears. They can be supplied at short notice in any RAL colour in addition to the standard colours (natural anodised or black powder coated).

Specification

Aluminium 0.8x 10
anodised or black
anodised with millimetre scale



Order data	Order number
Filler strip	black
L = 1000 mm	A39-10
L = 2000 mm	A39-12
Filler strip	anodised mm-scale
L = 1000 mm	A39-15 A39-16
L = 2000 mm	A39-17 A39-18