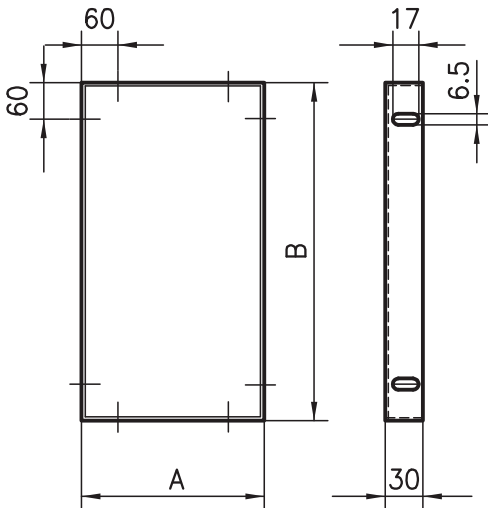


### Enclosure panels



**Application**

These panels are used to strengthen and enclose structures which are subject to heavy loads. Sheet steel enclosure panels serve two functions; firstly, they ensure safety and secondly, they enclose the machines attractively.

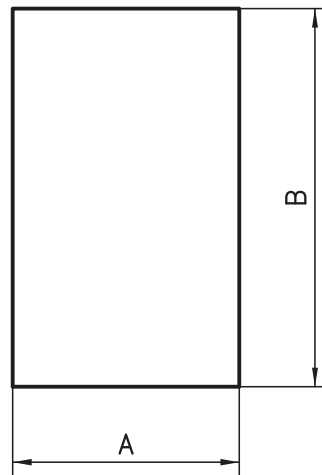
**Specification**

1.25 mm sheet steel, powder coated, maximum size: 900 x 1500 mm  
 Colour: RAL shade requested by the customer  
 Weight: 11.2 kg/m<sup>2</sup>



Order data	Order number
Enclosure panel, state colour	B53-00 A x B

### Aluminium sheets



**Application**

All types of enclosures.

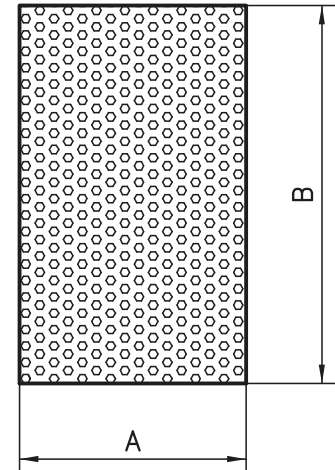
**Specification**

**Al-sheet** 1.5 and 3.0 mm  
 Anodised in natural colour and one side with a protection film  
 Maximum size: 1000 x 2000mm  
**Steel-sheet** 1.25 mm zinc-coated  
 Maximum size: 1000 x 2000 mm  
 Other dimensions or powder coated sheets are available on request  
 Weight: Al 1.5 mm: 4.05 kg/m<sup>2</sup>  
 Al 3.0 mm: 8.1 kg/m<sup>2</sup>  
 St 1.25 mm: 10.0 kg/m<sup>2</sup>



Order data	Order number
Aluminium sheet, 1.5 mm	A53-15 A x B
Aluminium sheet, 3 mm	A53-30 A x B
Steel sheet 1.25 mm	A53-51 A x B

### Expanded metal

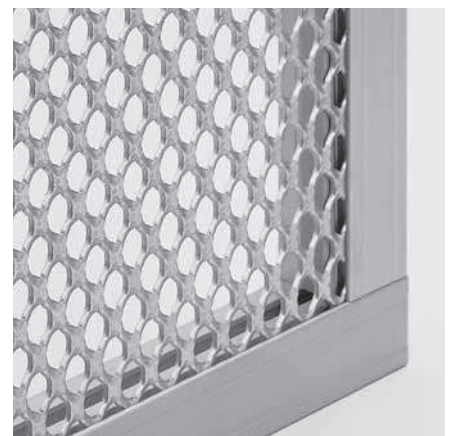


**Application**

The panel for designers with taste – light and attractive, but nonetheless sturdy. Can be used for virtually any purpose.

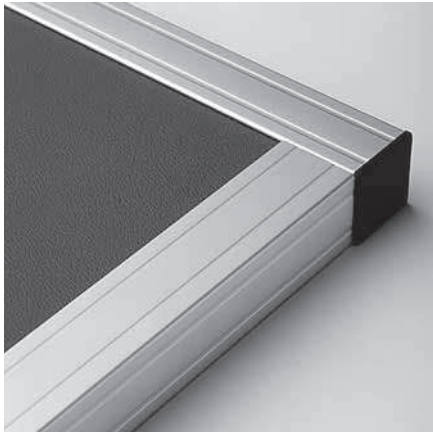
**Specification**

Aluminium 2 mm, raw  
 Maximum size: 1000 x 2000 mm  
 Weight: 2.0 kg/m<sup>2</sup>



Order data	Order number
Expanded metal	A54-20 A x B

## Composite panels



### Application

Intrinsically high strength enclosure panels. The thicknesses of the panels fit the narrow slots of the different 30 mm base extrusions, guaranteeing a tidy finish.

### «DIBOND» specification

Composite panel lined on either side with 0.3 mm thick aluminium sheets. Stove-enamelled on either side.

Thickness: 2.0 mm

Colour: aluminium metallic finish

Thickness: 3.0 mm

Colour: white, similar to RAL 9016  
blue, similar to RAL 5002  
black, similar to RAL 9005

Size: max. 1250 x 2500 mm

Weight: 2.0 mm: 2.9 kg/m<sup>2</sup>  
3.0 mm: 3.8 kg/m<sup>2</sup>

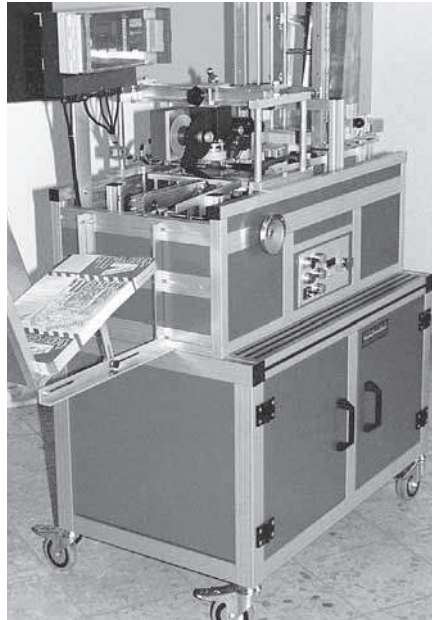
### Specification «DILITE»

Composite panel lined on either side with 0.2 mm thick aluminium sheets. Stove-enamelled on either side.

Colour: white, similar to RAL 9016

Thickness: 3.0 mm

Size: max. 1500 x 3000 mm



## Micro chipboard



### Application

This inexpensive panelling is inserted directly into the 8 mm slot on extrusions. The panels are lined with a white film on either side. They are highly fire-retardant and are used most commonly in the construction of exhibition stands and shop fittings.

### Specification

Plastic-coated pressboard.

Highly fire-retardant according to DIN 4102

Thickness: 6 mm

Size: max. 2100 x 2800 mm

Colour: white

Weight: 5.2 kg/m<sup>2</sup>

### «ALUCOBOND» specification

Composite panel lined on either side with 0.5 mm thick aluminium sheets.

Thickness: 4.0 mm

Surface: anodised in a natural colour on either side

Size: max. 1250 x 2500 mm

Weight: 4.0 mm: 5.5 kg/m<sup>2</sup>

Order data	Order number
DIBOND 2 mm	A51-12 A x B
DIBOND 3 mm, state colour	A51-13 A x B
DILITE 3 mm	A51-33 A x B
ALUCOBOND 4 mm anodised	A51-22 A x B

Order data	Order number
Micro dense fibreboard	A50-57 A x B

## PET-G



### Application

This transparent panel is food-safe and can be used in clean-room applications and medical technology. Metal machining and cold or hot forming is possible

### Specification for Pet-G

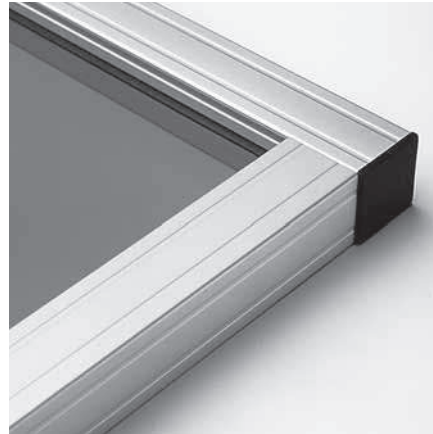
impact-resistant, oil-resistant, food-safe

Colour: clear as glass, transparent  
 Thicknesses: 3, 4, 5, 6, 8 mm  
 Size: max. 2000 x 3000 mm  
 Weight: 3 mm: 4.14 kg/m<sup>2</sup>  
 4 mm: 5.52 kg/m<sup>2</sup>  
 5 mm: 6.90 kg/m<sup>2</sup>  
 6 mm: 8.28 kg/m<sup>2</sup>  
 8 mm: 11.0 kg/m<sup>2</sup>

Order data	Order number
PET-G plate 3 mm	A50-73 A x B
PET-G plate 4 mm	A50-74 A x B
PET-G plate 5mm	A50-75 A x B
PET-G plate 6 mm	A50-76 A x B
PET-G plate 8 mm	A50-78 A x B

Other plastic plates available on request

## Acrylic glass



### Application

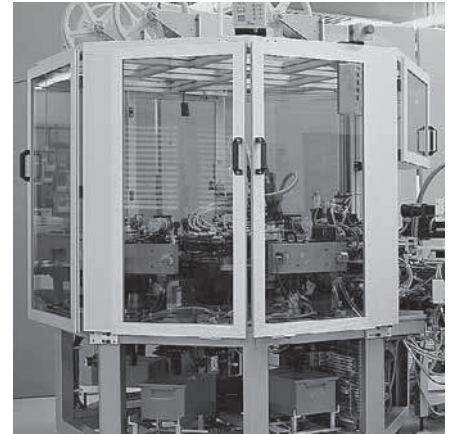
For machine safety enclosures, room partitions and display cases. (suitable for metal machining). Hot forming possible using special tool.

### Specification for acrylic glass

Colours: clear as glass, or on request  
 Thicknesses: 3, 4, 5, 6, 8 mm  
 Size: max. 2000 x 3000 mm  
 Weight: 3 mm: 3.55 kg/m<sup>2</sup>  
 4 mm: 4.70 kg/m<sup>2</sup>  
 5 mm: 5.90 kg/m<sup>2</sup>  
 6 mm: 7.10 kg/m<sup>2</sup>  
 8 mm: 9.45 kg/m<sup>2</sup>

Order data	Order number
Acrylic glass 3 mm	A50-13 A x B
Acrylic glass 4 mm	A50-14 A x B
Acrylic glass 5 mm	A50-15 A x B
Acrylic glass 6 mm	A50-16 A x B
Acrylic glass 8 mm	A50-18 A x B

## Polycarbonate



### Application

This panel is extremely impact-resistant and is used for windows and doors in safety guards. Metal machining and cold or hot forming is possible. We can provide blank cuts or ready-machined panels.

### Specification for polycarbonate

Colours : clear as glass  
 Thicknesses: 3, 4, 5, 6, 8 mm  
 Size: max. 2000 x 3000 mm  
 Weight: 3 mm: 3.60 kg/m<sup>2</sup>  
 4 mm: 4.80 kg/m<sup>2</sup>  
 5 mm: 6.00 kg/m<sup>2</sup>  
 6 mm: 7.20 kg/m<sup>2</sup>  
 8 mm: 9.60 kg/m<sup>2</sup>

Order data	Order number
Polycarbonate 3 mm	A50-33 A x B
Polycarbonate 4 mm	A50-34 A x B
Polycarbonate 5 mm	A50-35 A x B
Polycarbonate 6 mm	A50-36 A x B
Polycarbonate 8 mm	A50-38 A x B

## Rigid PVC foam plates



### Application

For enclosures or as shelves for light elements. Metal machining and cold or hot forming is possible. The plastic plates are placed directly in the extrusion slots or mounted using fixing elements such as brackets, Uniblocks or quick-release fasteners.

### Specification

Rigid plastic foam,  
scratch-proof and impact-resistant  
oil-resistant  
highly fire-retardant according to DIN 4102  
(self-extinguishing)

Colour: white  
Thickness: 3, 4, 6, 8 mm  
Size: max. 2000 x 3000 mm  
Weight: 3 mm: 2.1 kg/m<sup>2</sup>  
4 mm: 2.8 kg/m<sup>2</sup>  
6 mm: 4.2 kg/m<sup>2</sup>  
8 mm: 5.6 kg/m<sup>2</sup>

Other colours may be supplied on request.

Order data	Order number
Rigid PVC foam plate 3mm	A50-63 A x B
Rigid PVC foam plate 4 mm	A50-64 A x B
Rigid PVC foam plate 6 mm	A50-66 A x B
Rigid PVC foam plate 8 mm	A50-68 A x B

## Steel wire mesh

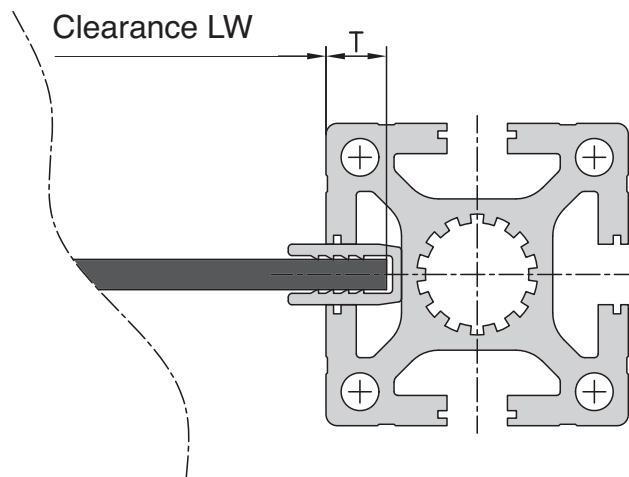


### Application

Safety guards, store partitions, restricted access, etc.  
This wire mesh can be inserted directly into the 8mm slot on the extrusion together with the surround extrusion C39-70 and the clamping extrusion B19-6.

### Specification

Zinc-coated steel  
Mesh width: 40 mm  
Wire thickness: 4 mm  
Size: max. 1000 x 2000 mm  
(1250 x 2500)  
Weight: 4.5 kg/m<sup>2</sup>



### Massangaben

	Basis 30	Basis 40	Basis 50
Gittereinsatztiefe T	5mm	8mm	12.5mm
Gittergröße A50-44	LW + 10mm	LW + 16mm	LW + 25mm
U-Klemmprofilänge in Gehung	LW + 13mm	LW + 19mm	LW + 28mm

Order data	Order number
Steel wire mesh	A50-44 AxB