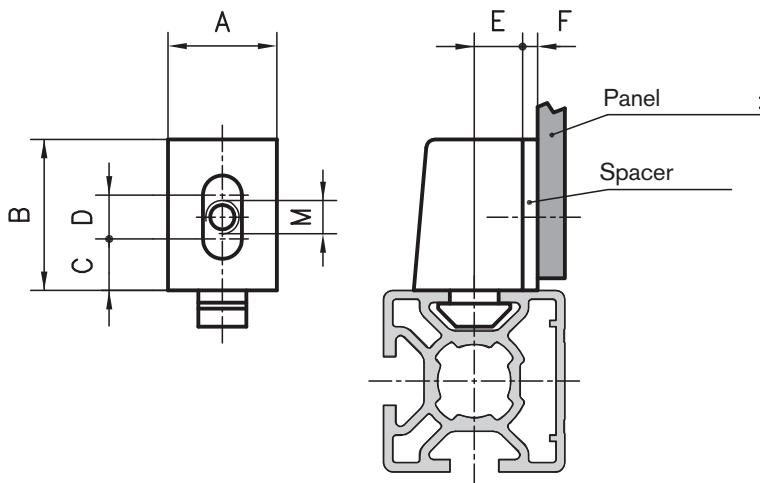


Uniblock



Application

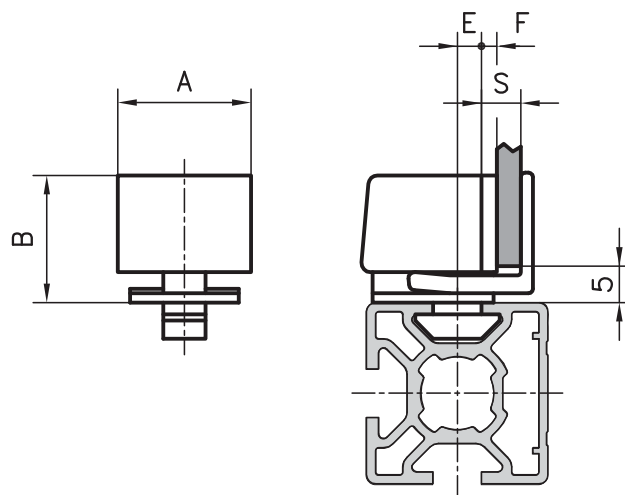
The uniblock is used to secure all sorts of panels in place. The uniblock can be attached to the extrusion without having to use any screws thanks to the attached anchor-head. The panel is then screwed to the uniblock. The captive square nut provides a large tolerance range. Different spacers can be used to give the required gap between the panel and the edge of the extrusion.

Specification

PA-GF, black,
square nut, zinc-coated steel



Clamping block



Application

The clamping block can be used to mount panels to extrusions without any additional fixings. The panel is clamped in the block by means of a toothed slide, simply and without having to use a tool. Spacers can also be used in the clamping block to give the required gap between the panel and the edge of the extrusion.

Specification

PA-GF, black

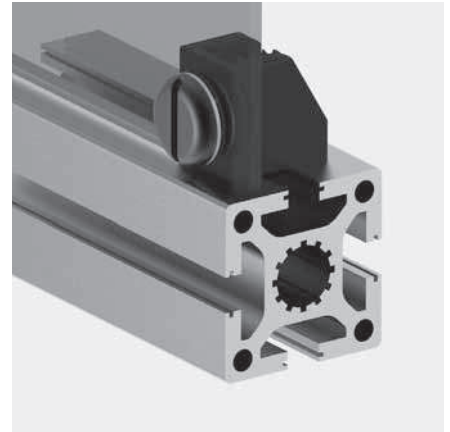
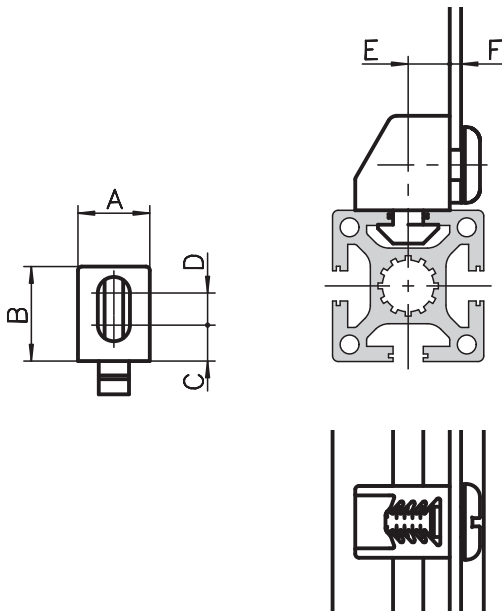


Order data	Order number
A B C D E M	
Uniblock extrusion base 50	
19 25 7.5 9.5 16	M4 A30-94
	M5 A30-95
	M6 A30-96
Uniblock extrusion base 40	
19 25 7.5 9.5 11	M4 C30-94
	M5 C30-95
	M6 C30-96
Uniblock extrusion base 30	
19 25 11 4.5 6	M4 B30-94
	M5 B30-95
	M6 B30-96
Uniblock extrusion base 20	
12 16 5.5 4.5 5	M4 D30-94

Order data	Order number
Spacers for extrusion base 50 / 40 / 30	
F = 2 mm (without holes)	A302-97
3 mm	A303-97
5 mm	A305-97
Spacers for extrusion base 20	
F = 1 mm (without holes)	D301-97
2 mm	D302-97
3 mm	D303-97
4 mm	D304-97

Order data	Order number
A B E G Smax.	
Clamping block extrusion base 50	
22 21 13.5 5 10 mm	A30-98
Clamping block extrusion base 40	
22 21 8.5 5 10 mm	C30-98
Clamping block extrusion base 30	
22 21 3.5 5 8 mm	B30-98
Spacers for extrusion base 50 / 40 / 30	
F = 2 mm	A302-98
3 mm	A303-98
5 mm	A305-98

Rapid connection blocks



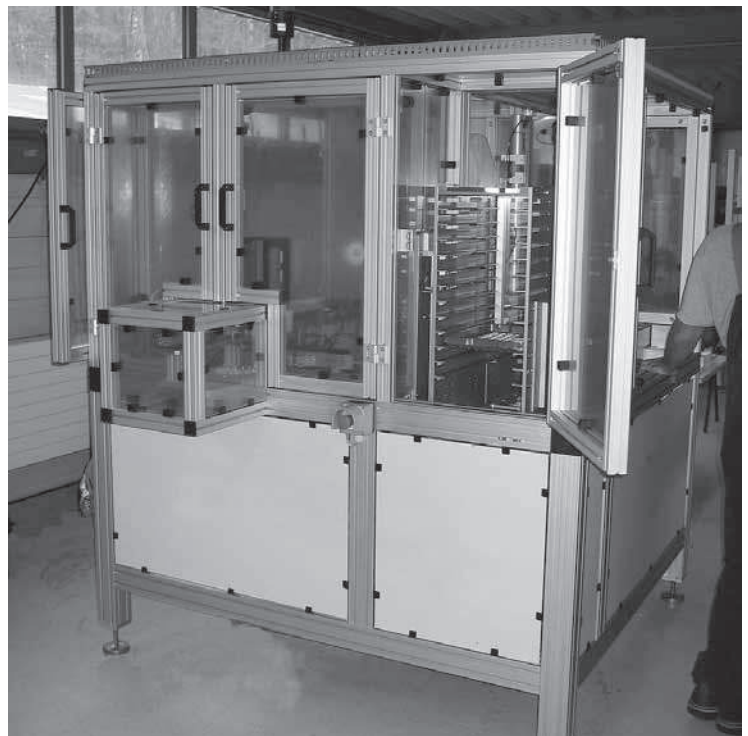
Specification

PA-GF, black
Fastening pin, PA-GF
Wave washer, POM

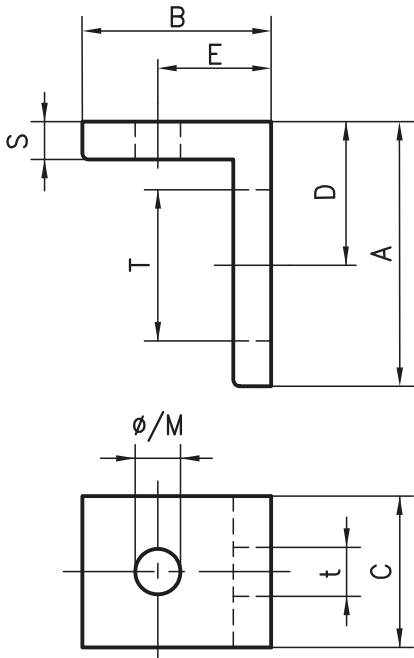
Application

The rapid connection block is used to secure all sorts of panels in place up to 5mm in thickness. The rapid block can be attached to all 50/40/30 base extrusions without having to use any screws thanks to the corresponding base. The panel is then attached using only a plunger pin. It can be easily unscrewed by simply turning it a quarter turn.

Measurement data						Order number
A	B	C	D	E	F	
Base 50						
19	25	9.5	8.5	16	to 5	A30-80
Base 40						
19	25	9.5	8.5	11	to 5	C30-80
Base 30						
18	25	11	4.5	8	to 5	B30-80



Attachment bracket



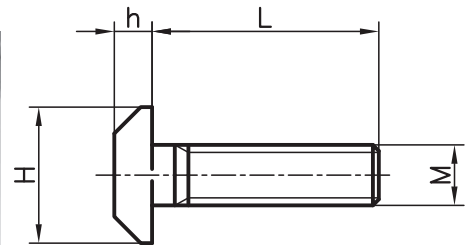
Application

The fixing angle is used to mount additional equipment, panelling, work tops, valves, electrical switchgear, etc. The advantage of these is that they are slotted on one side, allowing fine adjustment.

Specification

Aluminium, matt, anodised in natural colours

T-bolts



Application

T-bolts are used to fasten all types of components and are simple to insert, even after assembly. The anti-twist shape is a help during assembly.

Specification

8.8 steel, zinc-coated

Scope of delivery

Screw, hexagonal nut, washer



Order data							Order number			
A	B	C	D	E	S	Txt	Ø	Thread	Through-hole Ø	Thread M
45	45	20	25	25	5	20x6.5	6.2	M6	A30-76	A30-86
35	25	20	19	15	5	20x6.5	4.2	M4	A30-54	A30-64
35	25	20	19	15	5	20x6.5	5.2	M5	A30-55	A30-65
35	25	20	19	15	5	20x6.5	6.2	M6	A30-56	A30-66
25	25	15	14	15	4	13.5x6	3.2	M3	B30-53	B30-63
25	25	15	14	15	4	13.5x6	4.2	M4	B30-54	B30-64
25	25	15	14	15	4	13.5x6	5.2	M5	B30-55	B30-65
25	25	15	14	15	4	13.5x6	6.2	M6	B30-56	B30-66

Order data			Order number	
MxL	H	h		
Extrusion base 40/50				
M8x20	18	5	A35-20	
M8x25	18	5	A35-25	
M8x30	18	5	A35-30	
M8x40	18	5	A35-40	
M8x60	18	5	A35-60	
Extrusion base 40/50				
M6x18	16	4.5	C35-18	
M6x25	16	4.5	C35-25	
M6x30	16	4.5	C35-30	
Extrusion base 30				
M6x15	13	4	B35-15	
M6x20	13	4	B35-20	
M6x30	13	4	B35-30	
M6x40	13	4	B35-40	

Further dimensions on request